



# GMT MONTHLY MEMBERSHIP PROGRESS REPORT

Results as of: 1/31/2024

Multiple District 31

LOCATION: NORTH CAROLINA

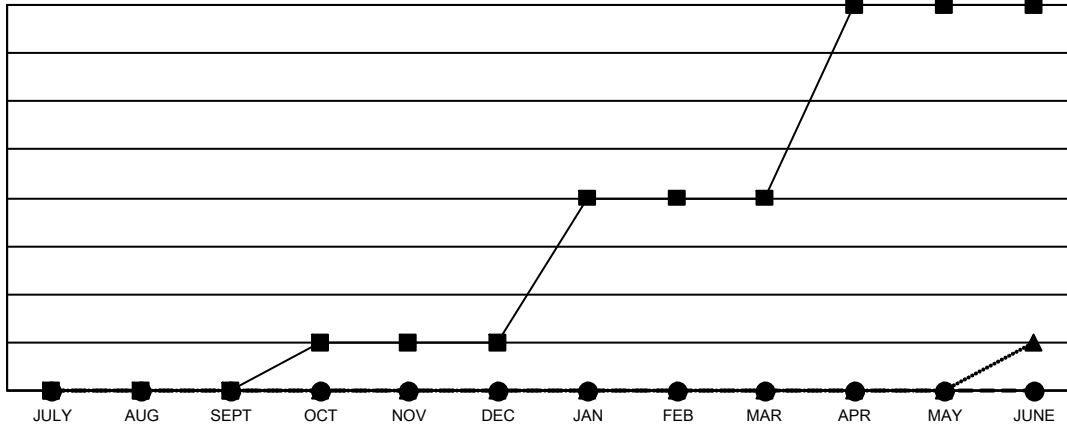
GMT: OPEN

GMT CA 1

Clubs			
RESULTS FOR 2023-2024			
QUARTER	NEW CLUB GOAL	NEW CLUBS	DROPPED CLUBS
JULY/AUG/SEPT	0	0	2
OCT/NOV/DEC	1	0	4
JAN/FEB/MAR	3	0	0
APR/MAY/JUNE	4	0	0

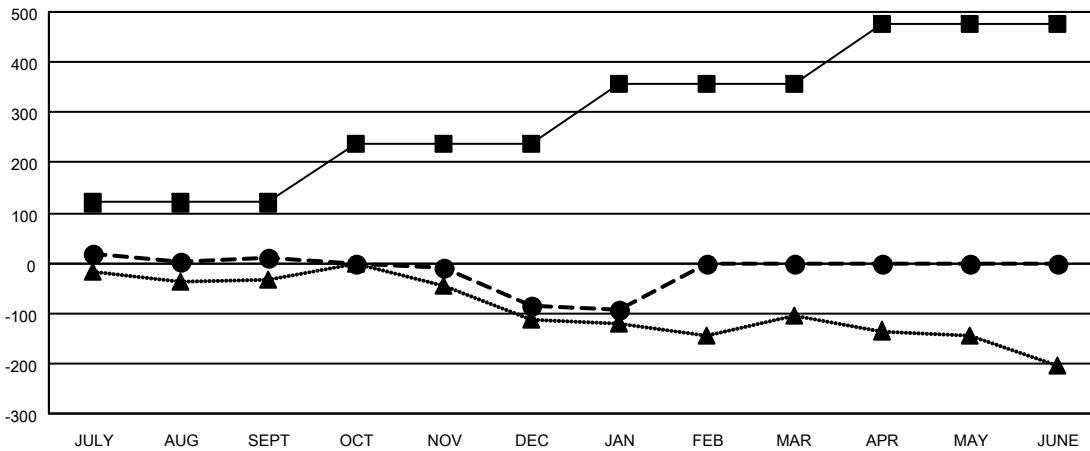
Members			
RESULTS FOR 2023-2024			
QUARTER	MEMBER GROWTH NET GOAL	MEMBER GROWTH ACTUAL	DROPPED MEMBERS ACTUAL (including transfers)
JULY/AUG/SEPT	120	155	115
OCT/NOV/DEC	116	98	179
JAN/FEB/MAR	120	58	50
APR/MAY/JUNE	121	0	0

GOALS AND ACTUAL NEW CLUBS CUMULATIVE



- - CURRENT YEAR GOALS FOR NEW CLUBS
- - CURRENT YEAR ACTUAL NEW CLUBS
- ▲ - LAST YEAR ACTUAL NEW CLUBS

GOALS AND ACTUAL MEMBERS CUMULATIVE



- - MEMBER GROWTH NET GOAL
- - MEMBER GROWTH ACTUAL
- ▲ - LAST YEAR MEMBERSHIP ACTUAL

DROPPED CLUBS: 6	99 CLUBS OF 246 ADDED 1 OR MORE NEW MEMBERS	<b>GENDER DISTRIBUTION</b>
		MALE 2,908 (64.82%)
		FEMALE 1,578 (35.18%)
<b>DROPPED MEMBERS</b>	<a href="#">CLICK HERE FOR CUMULATIVE MEMBERSHIP DATA</a>	TOTAL FAMILY UNIT MEMBERS 1,022
DECEASED 53		FAMILY MEMBERS PAYING HALF DUES 525
CLUB CANCELLED 41		
OTHER 250		
<b>TOTAL 344</b>		